

OptiFlow SaaS

Advanced cloud-based route optimization technology for fully automated planning.

PTV LOGISTICS

Revolutionize the way you plan and optimize your logistics

OptiFlow SaaS is a cloud-based application that revolutionizes the way you plan and optimize your routes. With its advanced algorithms, it automatically distributes orders across available resources while considering restrictions and minimizing total cost. The software provides transport planners with a comprehensive solution that helps to streamline logistics operations and drive sustainable growth. As the world around us is rapidly changing with new regulations, societal changes and market trends, OptiFlow offers flexibility and adaptability to help businesses navigate these challenges and stay ahead of the curve.

Your Benefits



Healthy Profit

Reduce transportation costs and increase fleet utilization.



Happy customers

Provide better delivery performance and increase punctuality.



Less Air Transported

Increase load factor and reduce carbon footprint.

A selection of OptiFlow references



Technology

100% Cloud

OptiFlow is a cloud-based software that eliminates the need for additional server infrastructure. This cloud setup enables quick scaling of orders, vehicles, and plans, allowing you to handle up to 10,000 orders in a single plan. Additionally, with automatic weekly updates and regular new feature releases, OptiFlow ensures that you always have access to the latest technology and features to meet the demands of modern logistics.

Highly Configurable

OptiFlow's high configurability sets it apart in the field of transport optimization. With an extensive set of parameters that can be adjusted to fit specific transport operations, OptiFlow delivers customized solutions to meet your unique needs. Despite being a standard platform, its extensive set of parameters and settings offer unparalleled flexibility. OptiFlow also takes both hard and soft constraints into account, ensuring the desired outcome is achieved every time.

Best-in-class Algorithms

OptiFlow's algorithm design is the foundation of its exceptional performance. Our state-of-the-art technology tackles the complex puzzle of planning and optimization with ease, comparing billions of possible combinations to deliver outcomes that surpass human calculation. The result is lightning fast planning and maximum savings, elevating performance to new heights.

User-Friendly

Thanks to its user-friendly interface, OptiFlow empowers transport planners by providing them with a comprehensive and easy-to-understand overview of all orders, routes, vehicles, and drivers. The application optimizes orders and assigns vehicles in a cost-efficient manner, delivering faster results than traditional methods. And if you need to make changes, OptiFlow offers manual adjustments and suggestions for any orders that cannot be placed on a route.

Power module

Power is a cutting-edge add-on, featuring a new optimization engine that replaces the standard one. It enables multiple parallel optimizations and intelligently rotates the problem across high-performance engines for maximum speed. This innovative optimization method, combined with its boosted infrastructure, results in significantly faster planning times, reducing the workload for planners, meeting tight customer and production deadlines, and allowing for quick scenario planning during exceptions. Moreover, this trailblazing optimization technique has led to unparalleled cost savings at our clients.



Continuous Improvement

Evolution

OptiFlow is the epitome of a constantly evolving platform. With weekly updates and regular new feature releases, the platform adapts to meet the ever-changing needs of its customers. Working hand in hand with our largest customers, we co-invest in the development of highly relevant functionalities that are then rolled out centrally for all users. In an era where the speed of planning is a crucial aspect, especially in e-commerce, OptiFlow is always pushing the boundaries of what is possible.

Collaboration

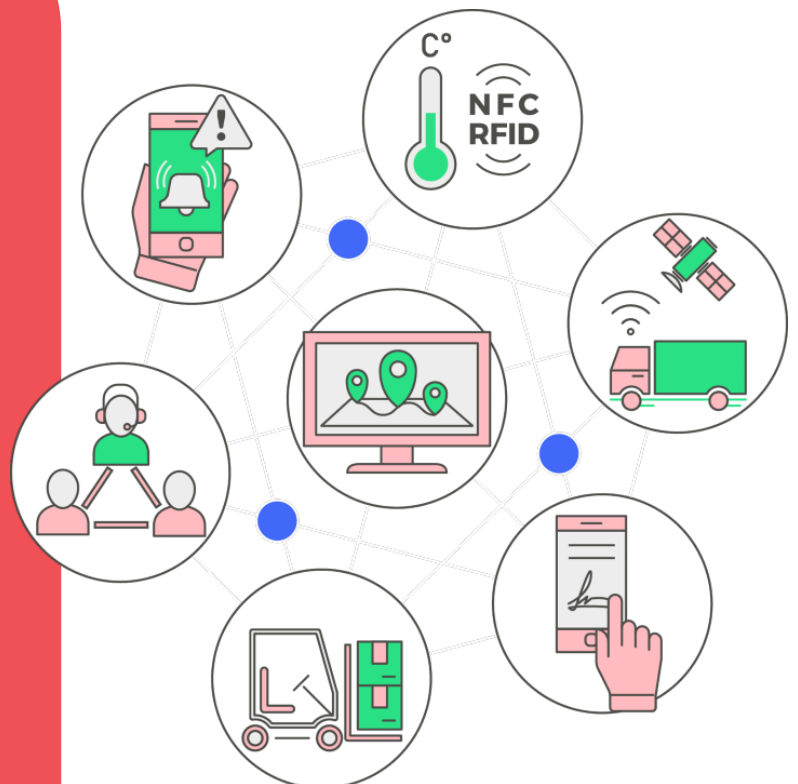
OptiFlow is a standard solution for logistics planning that requires careful and extensive calibration to meet the unique needs of each customer. Our approach is not just about delivering a product, but about forming a partnership with our customers. We work together to fully understand their needs and provide personalized guidance throughout their journey towards fully automated planning processes. By actively listening to our customers and challenging them to improve, we ensure optimal results for their business.

THE PERFECT MATCH: PTV AXYLOG

Real-time transportation visibility platform

PTV Axylog provides real-time visibility, control and performance analysis for the entire procurement and delivery process for producers, carriers, logistics partners and large-scale retailers.

Extend OptiFlow with PTV Axylog and combine route optimization with real-time transport visibility. This makes it simple for you to plan, trace and manage all your logistics flows. For higher efficiency and satisfaction along your entire supply chain.



Discover more at myptv.com